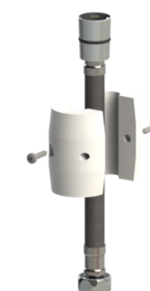
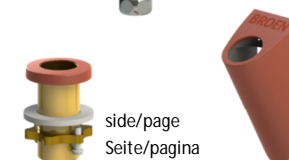


BROEN HAND-HELD SHOWER

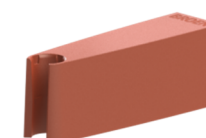
- DK** Installationsvejledning
- UK** Setup guide
- D** Installationsanleitung
- NL** Installatiehandleiding
- JP** セットアップガイド



side/page
Seite/pagina
ページ 4



side/page
Seite/pagina
ページ 3



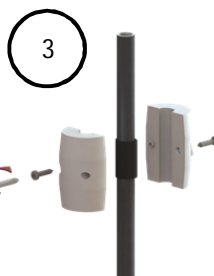
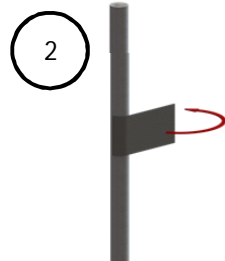
side/page
Seite/pagina
ページ 2

BROEN

INTELLIGENT FLOW SOLUTIONS



4 Nm



T:\94G0151.DOCX

BROEN LAB develops, manufactures and delivers complete range of fittings for professional laboratories. Our know-how and our quality products ensure the precise flow of water, gases and air, from source to user.

BROEN LAB solutions are used by professional users in many kinds of laboratories, from the education and health sectors to industry in general. Our products are already an integrated part of many workplaces. From fittings for purified water, nitrogen, vacuum and compressed air, to the control and regulation of pure gases in critical applications such as a gas chromatography and spectrometry.

Our extensive knowledge allows us to continually develop and optimize our products so that they meet customer needs and specifications. Safety, functionality and quality are an integral part of product design and flexibility. Our insight and understanding of working environments and safety in laboratories allow us to develop custom solutions for projects around the world. Use us to plan your project so we can advise you on laboratory layout and design.

HEAD OFFICE

BROEN LAB GROUP
Skovvej 30 • DK-5610 Assens
Tel. +45 6471 2095 • Fax +45 6471 2476
E-mail: lab@broen.com



BROEN LAB GROUP ISO 9001 certification
In September 1991 BROEN LAB GROUP was certified according to ISO 9001 as one of the first Danish companies. The certification was carried out by Bureau Veritas, Denmark, for our Danish site at Assens.
The quality management system of BROEN LAB GROUP now complies with detailed specifications laid down by the internationally acknowledged EN ISO 9001:2008. This certification will further contribute to BROEN LAB GROUP's reputation for quality and reliability.

www.broen.com

INTERNATIONAL OFFICES

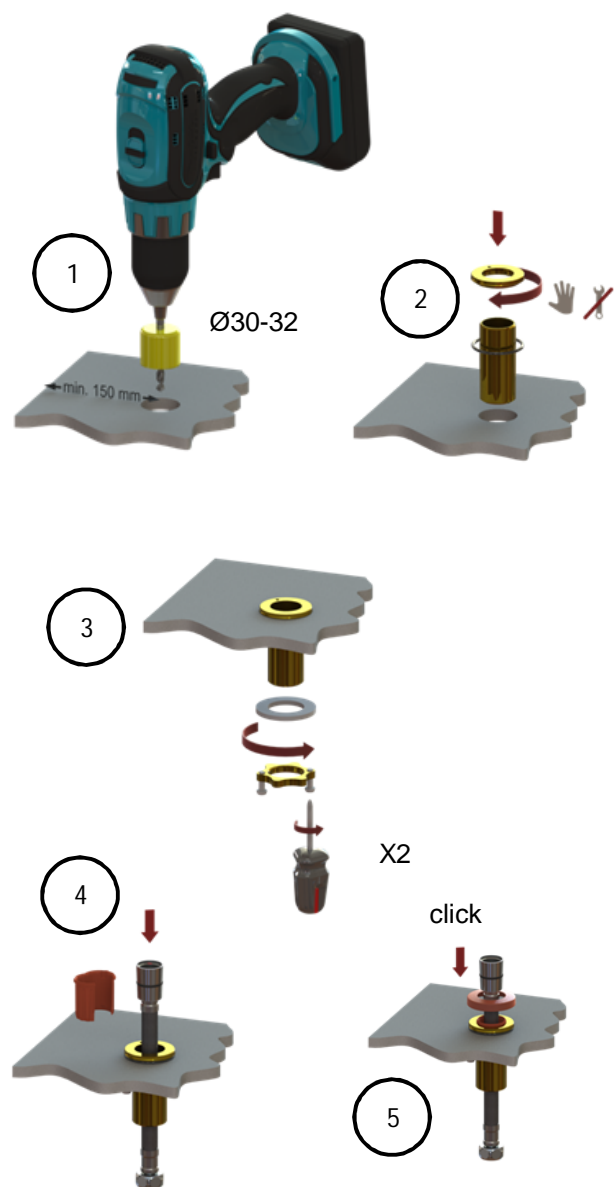
BROEN Armaturen GmbH
Industriestrasse 8 • D - 64579 Gernsheim • Germany
Tel. +49 6258 9319-0 • Fax +49 6258 51812
E-mail: info@broen.de

BROEN VALVES Ltd.
7, Cleton Street Business Park, Cleton Street
Tipton • West Midlands DY4 7TR • U.K.
Tel. +44 121 522 4515 • Fax +44 121 522 4535
E-mail: broenvalves@broen.com

BROEN Singapore Pte. Ltd.
10 Bukit Batok Crescent #10-02 • The Spire S(658079) • Singapore
Tel: +65 6298 0662 • Fax: +65 6298 0468
E-mail: sales@broen.com.sg

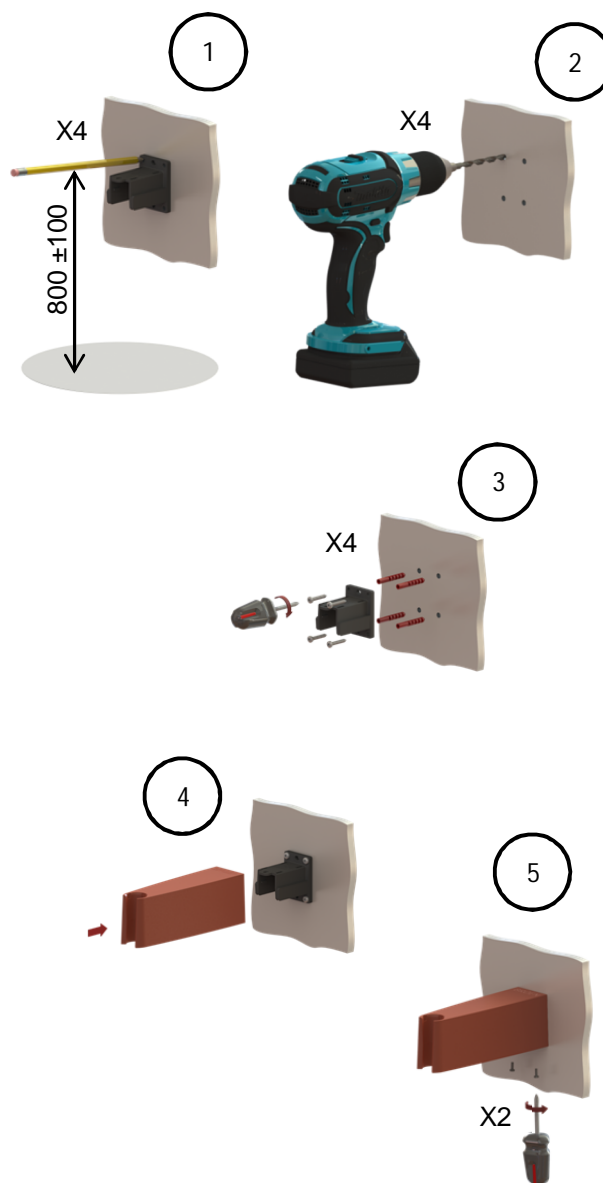


Bordmontage – Table mounting – Tischmontage
Tafelmontage – テーブルマウント



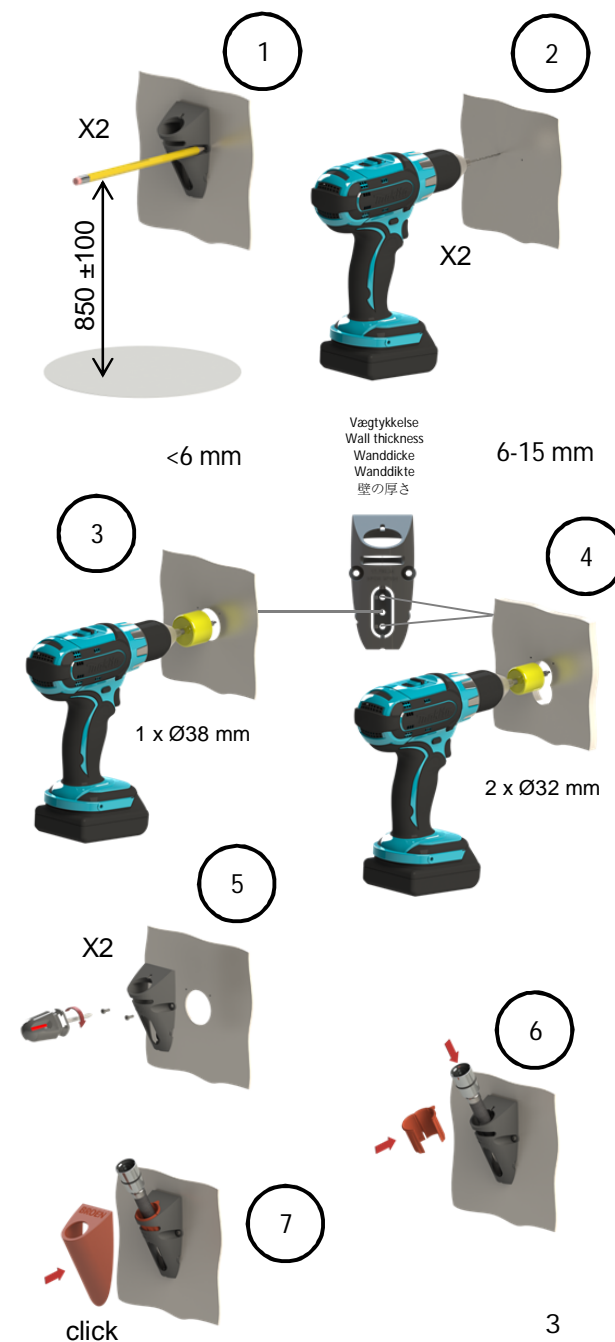
1

Vægmontage – Wall mounting – Wandmontage
Muurmontage - ウォールマウント



2

Panelmontage – Panel mounting – Paneelmontage
Paneelmontage – パネル取付



3